

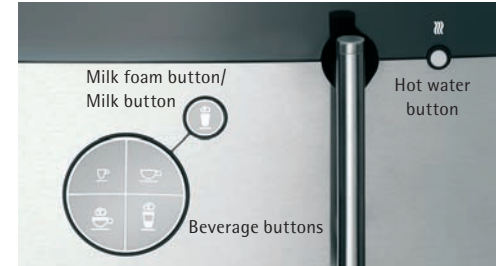
Brief instruction WMF 1000

Operation

1x briefly	1x espresso
2x briefly	2x espresso
1x long	1x ristretto
1x briefly	1x cappuccino
2x briefly	2x cappuccino
1x long	1x milk coffee



1x café crème	1x briefly
2x café crème	2x briefly
1x mug café crème	1x long
1x latte macchiato	1x briefly
not used	
1x espresso macchiato	1x long



1x press briefly

1 cup milk

press and hold

Milk foam on request



1x press briefly

1 glass hot water

press and hold

Hot water on request

Ready to operate display

your selection pls
08:15 09.06.2008

Coffee strength for the next beverage

- **Normal** - standard setting
- **Mild** - about 15 % weaker → 2 x minus button
- **Strong** - about 15 % stronger → 2 x plus button

Using other types of coffee in the manual insert

- > Open manual insert lid
- > Place the ground coffee in the manual insert (max. 15g for max. one cup)
- > Close the lid
- > Select the beverage with the beverage buttons

This procedure can be cancelled with the off/c button. Already-inserted ground coffee is removed via the coffee grounds container.



This manual does not replace the user manual. Always observe the safety instructions in the user manual, for your safety and for care of your WMF 1000.



Storage of this brief instruction



Care

Care programs

- Warm-up rinse/coffee system rinse
- Milk system rinse
- Coffee machine cleaning

Filter change and descaling see User Manual.

Manual cleaning:

- Cleaning the milk system

Cleaning the brewing unit and general cleaning see User Manual.

Milk system rinse

- > Slide the All-in-One spout to the top position
- > Place an appropriate container under the All-in-One spout
- > Wipe off the outside of the milk hose with a clean, damp cloth
- > Place the milk hose with the milk nozzle on the hot water spout and turn it clockwise to the stop
- > Start the rinse with the care button

After the rinse (Duration approx. 30 seconds):

- > Turn the milk hose anticlockwise, disconnecting it from the hot water spout
- > Slide the All-in-One spout downward

Call up the care programs

To select the care programs without a previous request on the display:

- > Press the P button

select care program
browse: Care button

- > Use the care button to browse to the desired program
- > Select the displayed program with the P button

Cleaning program

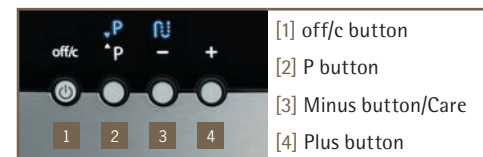
- > Confirm machine cleaning with the P button
- > Follow the individual steps shown on the display
- > Place an appropriate container (min. 3 litres) under the All-in-One spout
- > Place an appropriate container (min. 3 litres) under the All-in-One spout
- > Press the care button

The cleaning program starts.

After 5 minutes, the machine cleaning ends. The display calls for a manual milk system cleaning.

Warm-up rinse/Coffee system rinse

- > Place an appropriate container under the All-in-One spout
- > Confirm the request with the P button
- > Start the rinse with the care button



Milk system cleaning

- > Remove the All-in-One spout and the milk hose
- > Disassemble all parts
- > Leave them in the cleaning solution (1 measuring cap WMF milk system cleaner and 200ml water) for 5 hours or overnight.
- > Then rinse all parts thoroughly with running warm water
- > Reassemble the All-in-One spout and the milk hose, and replace them