

WMF



WMF 1

DE GB FR NL  
Typ 06 9990

# Contents

1.	Introduction	16
1.1.	Description	16
1.2.	Technical information	16
1.3.	Optimum coffee taste	17
1.4.	Appliance part designations	18
2.	Safety	19
3.	Operating	20
3.1.	First use	20
3.2.	Preparing coffee	22
3.3.	Switching off	23
4.	Care	23
4.1.	Cleaning	23
4.2.	Limescale removal	24
5.	Accessories and spare parts	25
6.	Warranty and service	25
7.	Problems	26
8.	Disposal	27

DE

GB

FR

NL

# 1. Introduction

## 1.1. Description

By opting for the WMF 1, you have opted for the best way of preparing coffee. The WMF 1 has more to offer than its striking design. As the world's smallest coffee pad machine, the WMF1 can be used practically anywhere. Whether in the office, on the terrace or even in the bedroom. Each cup of coffee is quickly and freshly prepared – at the touch of a button.

You can use the WMF 1 almost anywhere with a mains power supply. The WMF coffee pad machine prepares your coffee using conventional coffee pads (soft pads).

A cup holding 125 ml coffee is integrated in the WMF 1 and included in the supply scope.

Before enjoying your first cup of coffee, you will first have to prepare the WMF 1 for use. For this purpose you must carry out the steps detailed in Chapter 3.1 "Preparing for first use".

## 1.2. Technical information

Cup size	125 ml
Pad size	conventional coffee pads (soft pads, approx. ø70 mm)
Integrated water reservoir	yes
Cable tidy in base	depending on country version
Single button operation	yes
Preparation time	< 1 minute
Rated output	1.4 kW
Exterior dimensions (width x height x depth)	194 x 191 x 132 mm
Weight when empty	approx. 1700 g



## 1.3. Optimum coffee taste

### 1.3.1. Coffee flavour

DE

Ensure that you enjoy the best coffee flavour by resealing your pack of conventional coffee pads after use. The coffee pads are best kept in a tightly-sealed storage container.

### 1.3.2. Cleaning and limescale removal

To ensure that your WMF makes a perfect cup of coffee each time, clean the pad holder and regularly remove any limescale from your WMF 1.

Dispose of the used coffee pad after each use.

GB

### 1.3.3. Water

When preparing coffee, **only** use fresh, cool water to fill the integrated water reservoir. Do not fill it with any carbonated drinks.

The reservoir holds the precise volume of the associated cup.

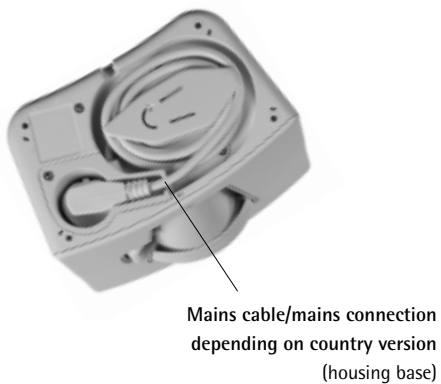
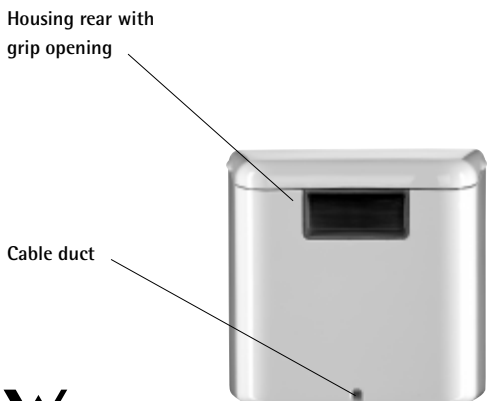
Because of the "one cup function", there will be no residual water left in the reservoir once your coffee has been prepared.

FR

NL

# 1. Introduction

## 1.4. Appliance part designations



## 2. Safety



### Important – please take note!

- Please read the operating manual through carefully before use. Disregarding the safety information could result in serious injuries and damage.
- Before preparing your first cup of coffee, fill the machine's water system with water. If the WMF 1 is not prepared for use as instructed, the appliance may be irreparably damaged. Such damage will not be covered by the warranty.
- The voltage specified on the type plate on the machine's base must correspond to the local mains voltage.
- If the main connection cable is damaged, disconnect the machine from the mains power supply. Contact your dealer.
- The machine must not be operated using a transformer.
- Place the machine on a level and stable counter.
- Children should be supervised at all times and particular care taken at all times.
- When preparing your coffee, **only use** fresh, cool and still drinking water.
- Take care to ensure that the pad holder is always fully inserted and that the cup has been correctly inserted into the specified cup recess. These measures will prevent accidental contact with hot water.

DE

GB

FR

NL

## 2. Safety



- The WMF 1 is only intended for domestic use.
- When opening the pad holder, remember that it could still contain residues of hot water:  
There is a risk of scalding!
- Disconnect the machine from the mains power supply when it is not in use and before cleaning it (disconnect the plug).  
Allow the machine to cool down before cleaning it.
- Never use water softeners containing sodium with your coffee machine.
- Never use the machine at altitudes exceeding 1500 m.
- The ambient temperature for proper operation is 10-35° C. Damage to the machine resulting from frost is not covered by the warranty.
- The machine must be protected from moisture.
- Disconnect the plug after each use, or in the event of a fault.

## 3. Operating



### 3.1. First use

**Important:** You cannot brew any coffee before having filled the water system with water for the first time in accordance with the operating manual.

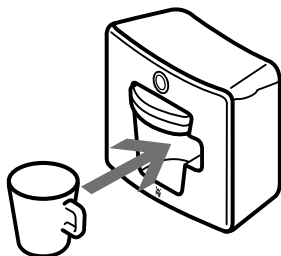
- Connect the machine to an appropriate mains socket. For transport purposes, the mains cable is integrated in the base of the WMF 1.

Note: For certain countries, you will find a separate mains connection cable enclosed with the coffee machine. Connect this cable to the base of the machine.

There are two steps when preparing your machine for first use (Initial filling of the water heating system):

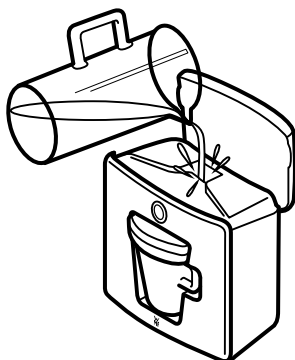
DE

### Step 1



- Ensure that the cup supplied is in the specified cup recess, and that the pad holder is fully inserted.

- Fill the water reservoir. For this purpose, open the lid above the water reservoir. Fill the reservoir with cool water, taking care not to exceed the "Max" mark. Then close the lid.



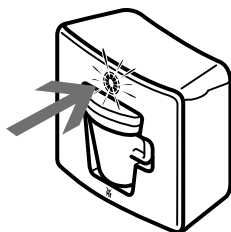
- Switch the machine on. For this purpose, press the button. The brewing process starts automatically; the boiler is filled with water. During this phase, the illuminated ring on the button will flash. The button ring will light up constantly once the brewing process is complete. Wait until the light has turned off.

- The cup will contain excess residual water. Empty the cup and replace it in the machine.

GB

### Step 2

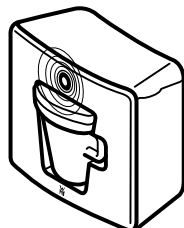
Repeat the whole process to completely fill the water heating system:



- Fill the water reservoir
- Switch the machine on; the brewing process will start automatically

FR

After the end of the second brewing process, the machine will carry out a diagnostic test. During this test, the illuminated ring will flash for one minute. Wait until the light goes out, empty the cup and replace it in the machine. Your coffee machine is now ready for use.



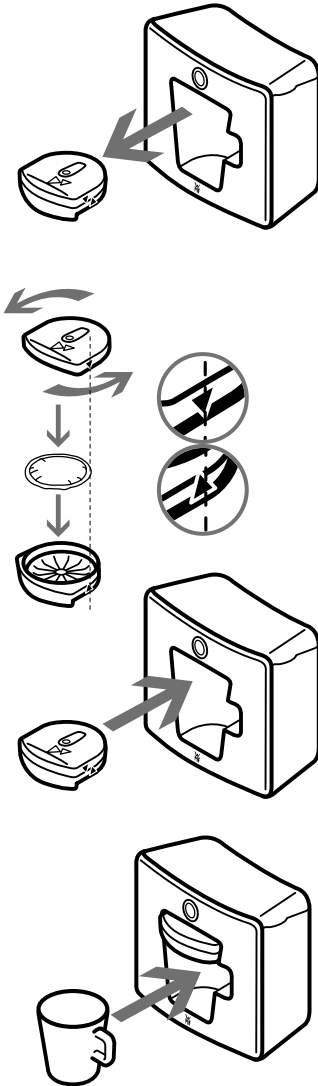
It is possible in rare cases that the preparation of the machine for first use has not been done correctly. In this case the button with illuminated ring will flash with high repetition. See the Chapter 7 "Problems" to solve this problem.

NL

## 3. Operating

### 3.2. Preparing coffee

After the preparation for first use and if you haven't used your machine for a while, flush out the system by boiling water in it at least twice without a coffee pad.



#### a) Preparation

- Fill the water reservoir with fresh water up to the "Max" mark. This corresponds to a cup size of 125 ml. This amount of water will produce the optimum coffee flavour.
- Pull the pad holder out of the machine.
- Open the pad holder by slightly twisting the upper section in the direction of the arrow (anti-clockwise). Grip the lower section firmly while twisting the upper section.
- Place the coffee pad in the lower section of the pad holder.
- Now twist the pad holder again in a clockwise direction to close it. In this regard, pay attention to the arrow markings on the upper- and lower pad sections.
- Push the pad holder from the front into the cup recess. Important: Push the pad holder in until it engages.
- Then insert the cup into the cup recess.

#### b) Brewing coffee

- Quickly press and release the button.

The machine will then heat up and the coffee will be brewed. During these phases, the light on the button will flash.

**Note:** The brewing and heating processes can be halted by pressing the button again.

This will switch off the machine.

### c) End of the brewing process

At the end of the brewing process, you will hear slightly louder pump sounds until the reservoir has been completely emptied. The button will light up constantly once the brewing process is completed. Your coffee has now been freshly prepared and you can remove the cup.

DE

### 3.3. Switching off

After the end of the brewing process the machine will switch off automatically, or you can quickly press and release the button. The brewing and heating processes can be halted by pressing the button again. This will switch off the machine.

GB

## 4. Care

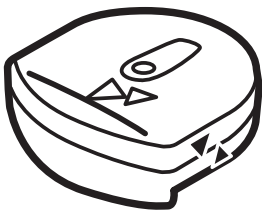


### 4.1. Cleaning

#### a) Maintaining the pad holder

Clean your pad holder regularly. For this purpose, remove the upper section of the pad holder by twisting. Grip the lower section firmly while twisting the upper section. Remove the pad rest from the lower section of the pad holder. For this purpose, depress the two notches of the pad rest. All three components of the pad holder can be cleaned in the dishwasher.

FR



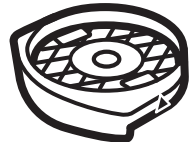
Pad holder, 3-part ready for use



Upper pad holder section with marking



Pad rest with notches



Lower pad holder section with marking

NL

## 4. Care

### 4.1. Cleaning

#### b) Maintaining the machine

Disconnect from the socket before cleaning. Clean your WMF 1 with a damp cloth, but never hold it under running water or immerse it. Never use abrasive cleaning agents or cleaning agents containing solvents.

### 4.2. Limescale removal

#### a) Limescale removal intervals

Water hardness, as well as the number of brewing processes, will determine the intervals at which you should remove limescale from your WMF 1. Regularly clean your machine of limescale. Ask your local water supply authority about the level of water hardness. Consult the following table for limescale removal intervals:

**Recommended limescale removal interval after months**  
given an average of 1, 3 or 5 cups per day

1 cup	12	8	6	3
3 cups	6	3	2	1
5 cups	4	2	1	1
Water hardness	soft	medium-hard	hard	

**Example:** If you prepare an average of 3 cups a day using soft water, you should clean your machine of limescale every 6 months.

#### b) Limescale removal process



Only remove limescale using the original WMF 1 limescale removal agent. Do not use limescale removal agents containing citric or acetic acid. You can obtain the WMF liquid limescale removal agent from your dealer.

- Completely fill the reservoir with the liquid limescale removal agent.
- Insert the pad holder, without a coffee pad, in the machine.
- Ensure that the cup is correctly inserted into the cup recess.

- Quickly press and release the button. The machine will switch on and carry out a boiling process without a coffee pad.
- Wait for about 5 minutes for the limescale removal agent to work. After the end of this period the system must be flushed out to ensure that any residual limescale removal solution is emptied out of the reservoir and integrated boiler.
- For this purpose carry out 5 boiling processes without coffee pads.

DE



On no account should you drink the water once boiled!



Please remember that the residual water could be very hot.



If the limescale removal process is halted for any reason (e.g. power cut, mains plug disconnected or machine switched off using the button), the limescale removal boiling process will also be aborted.

The machine will not indicate any need to flush out with water. In such cases, you should also carry out 5 boiling processes without coffee pads.

GB



Please also consult the additional information provided with the WMF 1 limescale removal agent.



Never leave the machine unattended during the limescale removal, reaction or rinsing phases.

## 5. Accessories and spare parts

Accessories and spare parts are available from your dealer.

- WMF 1 "Cup"
- WMF 1 pad holder
- WMF 1 limescale removal agent

FR

## 6. Warranty and service

Please also consult your dealer if you have any questions regarding the operation or functionality of your WMF 1.

Naturally, you are entitled to your full statutory warranty rights in the event of defects.

NL

# 7. Problems

Problem	Cause	Remedy
Machine does not boil water when first switched on.	Preparations for first use incorrectly carried out, boiler system is still empty.	Fill the reservoir with water. Insert pad holder. Carry out brewing process. Repeat process.
Machine only dispenses cold water.	Preparations for first use incompletely carried out.	Fill the reservoir with water. Insert pad holder. Carry out brewing process. Repeat process.
Pad holder cannot be removed after brewing.	The small hole in the centre of the pad rest is dirty, the brewing pressure cannot be released.	Wait until the pressure has been released. Then remove the pad holder and clean the small hole in the pad rest using a needle.
There is residual water in the reservoir at the end of the brewing process	The reservoir was filled above the "Max" mark.	Observe the "Max" mark.
	The system is clogged with limescale.	Remove limescale.
	Pad holder not fully inserted.	Insert the pad holder until it engages.
	Small hole in the pad holder rest dirty.	Remove the pad holder and clean the small hole in the pad rest using a needle.
	Reservoir filled with carbonated water.	Do not use carbonated water. Carry out two or three brews without a coffee pad, but with the pad holder inserted and the cup in place.



Problem	Cause	Remedy
The button flashes rapidly.	Problem, machine temperature too low (< 5°C).	Bring the machine into a warmer room and repeat the brewing process after an appropriate interval.
	Preparations for first use interrupted. As a consequence the machine is too hot.	Disconnect the machine from the power supply, wait for one hour and then repeat the preparations for first use.
Coffee or water escapes next to the cup during the brewing process.	Pad holder not fully inserted.	Fully insert the pad holder.
Pad holder cannot be inserted.	Pad holder lid not properly closed.	Open the pad holder and again twist to close.
	Coffee pad too thick.	Use suitable coffee pads.

DE

GB

FR

## 8. Disposal



Retain the original packaging to protect the machine during transport. Consult your local authority to find out the options for disposing of an old machine. The machine is subject to the electronic waste ordinance (WEEE/EU directive) and must not be disposed of with domestic refuse.

NL



WMF AG D-73309 Geislingen Fon 07331/25-1  
[www.wmf.de](http://www.wmf.de)  
printed 0407 V02